



YOUR
SUCCESS
IS OUR
BUSINESS

ABRASIVE BELT DESCALING MACHINE

砂布除鏽機

■ SBH-7 ■ SBH-12



model	SBH-7	SBH-12
Wire range	5.5~7.0mm	5.5~12mm

- High-Speed Single Head design for perfect abrasive sanding at speeds up to 5.0 m/s.
- SBH descalers are designed for low, medium, high carbon and stainless-steel rod.
- Suitable for all in-line wire drawing applications. Including the complete range of rod diameters, inlet speeds, and surface finish requirements.
- Modular construction for ease of instruction. Multiple units may be installed in-line for progressive rod surface finish applications.
- Operator friendly control panel and convenient access doors for superior productivity and ease of use.
- Supplied with dust collector.
- 高速單頭設計，速度可配合後段伸線機台，達 5.0 米 / 每秒。
- 適用於所有線上抽線設備。
- 涵蓋完整的線材尺寸 / 入線速度，以及線材表面的光澤度需求。
- 模組化設計容易安裝，可安裝多個單元於線材生產線上，以滿足不同的線材表面處理需求。
- 友善的操作介面使設備容易使用，並有效優化生產的便利性。
- 提供集塵設備。

DESCALING / CLEANING MACHINE (BRUSHING)

鋼刷除鏽機

■ SDC-7B2 ■ SDC-10B2 ■ SDC-16B2



model	SDC-7B2	SDC-10B2	SDC-16B2
Wire range	5.5~6.5mm	5.5~10mm	5.5~15mm

- Wire pre-treatment by motorized orbital brushing.
- Designed to remove surface oxidization and loose scale from the wire rod surface.
- Wire working ranges up to $\Phi 16$ mm.
- Brushes automatically adjusts to the input wire diameter size.
- Different types of brushes can be installed to accommodate special surface treatment.
- Supplied with dust collector.
- 設計去除線材表面的氧化和鬆散的氧化皮。
- 4 個鋼刷圍繞線材周圍轉動，達到線材表面清潔效果。
- 刷子可自動壓緊線材。
- 可安裝不同形式刷子，以滿足不同的線材表面處理需求。
- 提供集塵設備。

DRY COATING UNIT

潤滑粉被覆機

■ LCS-7 ■ LCS-16



model	LCS-7	LCS-16
Wire range	5.5~7.0mm	5.5~15mm

- A lubricant application system to applies a film of dry-lubricant to wire rod for the cold rolling process.
 - The lubrication is transported to the coating section by means of a motorized conveyor system.
 - The rod passes straight through the system while a consistent film of lubricant is applied to the wire rod.
 - Suitable to produce cold-rolled smooth or deformed wires.
- 線材通過潤滑粉槽，將潤滑粉覆蓋在線材表面上。
 - 潤滑劑通過動力輸送系統，輸送到塗層室。
 - 適用於生產冷軋線材和異型線材。

WATER CLEAN, WET COATING & DRYING UNIT

水清潔 / 披膜乾燥機

■ WCS-10M ■ WCS-16M



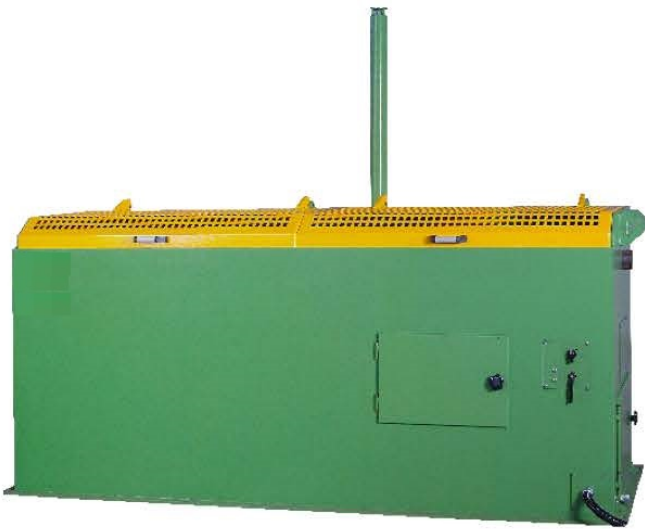
- High-pressure aqueous surface cleaning system.
 - Combined wet coating (lubricant carrier) and drying.
 - Environmentally friendly, effective and economic.
 - Extensive control functions for a safe, repeatable process and low energy consumption.
- 線材通過高壓水流，清潔表面殘留氧化殼。
 - 配合被膜烘乾機使用。
 - 廢水通過鐵粉分離機將可被回收及再次利用。
 - 不鏽鋼製水槽內含加熱器，可將水加溫至合適清洗溫度。

model	WCS-10M	WCS-16M
Wire range	5.5~10mm	5.5~15mm

■ WCM-10 ■ WCM-16

- Pre-coatings can be borax, salt coating, or specialty non-reactive pre-coatings.
 - Direct in-line drying of wire rods by convection heating.
 - Extensive control functions for a safe, repeatable process and low energy consumption.
- 可使過硼砂，石灰或是特殊潤滑粉，將線材表面塗層。
 - 採用直接通過乾燥方式，線材經過加熱器烘乾。
 - 線材直接通過加熱室，設有定時功能，能在每天上班前自動將水溫加熱至工作溫度。

model	WCS-10	WCS-16
Wire range	5.5~10mm	5.5~15mm





**DRAWING
MACHINE**

抽線機系列

Specifications subject to change without prior notice.

*規格如有變更，不另行通知。

STRAIGHT LINE WIRE DRAWING MACHINE

直線式伸線機

SCWD-600T



- Heavy duty – High Speed wire drawing machine.
 - Designed to produce high-quality wire: low,medium,high carbon, stainless, zinc coated wire or alloy wire.
 - Configurations from 2-16 drafts.
 - Capstan diameters from 300mm to 900mm.
 - Dancer-arm speed control.
 - High-efficiency Cheng I Wire patented gearbox. (>95% through the entire speed range.)
 - Optional induction hardened, ceramic or tungsten carbide coating capstans.
 - Capstans provided with Cheng I Wire's superior and patented capstan cooling technology.
 - Die boxes prepared for single or double dies, normal or pressure dies.
- Direct or indirect water-cooled dies.
 - Optional supplemental air cooling of the wire.
 - No specialized foundation required.

Other general equipment depending on customer requirements:

 - Laser gauge
 - Vibration dampening rollers.
 - Custom software packages for supervisory control and data acquisition
 - Rolling cassettes to produce smooth, round or sharped wires.
 - Rolling cassettes to produce cold-rolled concrete wire.
 - Wet drawing cassette for the bright wire.
 - Rotating die boxes for the precision wire.

- 適合低 / 中 / 高碳鋼線，不鏽鋼線或合金線材。
 - 可提供 2 至 16 道配置。
 - 專屬線胴冷卻系統，提供極高的冷卻能力。
 - 正一直線專屬高效率齒輪箱，高達 95% 傳動效率。
- 眼模採強制水冷卻系統。
 - 每一機台安裝鼓風機，提供線材額外冷卻。
 - 可搭配軋輪組使用。
 - 線胴表面提供鍍鋼或陶瓷噴塗。

model	SCWD-300	SCWD-400	SCWD-600	SCWD-700	SCWD-800	SCWD-900
Wire range	≤ 2.0mm	≤ 3.2mm	6.5~5.5mm	≤ 8.0mm	≤ 10mm	≤ 13mm
Capstan Dia.	Ø300	Ø400	Ø600	Ø700	Ø800	Ø900

SINGLE DRAFT OTO DRAWING MACHINE

單模過桿式伸線機

DCD-600H



model	DCD-400H	DCD-600H	DCD-760H
Wire range	≤ 3.2mm	5.5~6.5mm	5.5~9.0mm
Capstan	400mm	600mm	760mm

- For low carbon and high-carbon wire.
 - Modular design and scalable by adding additional units.
 - High-efficiency Cheng I Wire patented gearbox. (>95% through the entire speed range.)
 - Tungsten carbide coating capstan.
 - Water cooled capstan and direct or indirect water-cooled dies.
 - Die boxes prepared for single or double dies, normal or pressure dies.
 - Optional supplemental air cooling of the wire.
- 適用高 / 低碳鋼線材。
 - 模組化設計，可通過增加機台達到擴充效能。
 - 專屬高效率齒輪箱，高達 95% 傳動效率。
 - 線胴表面提供鎢鋼噴塗。
 - 專屬線胴冷卻系統，提供極高的冷卻能力。
 - 眼膜盒採取強制式水冷，可強力冷卻眼膜。
 - 眼膜盒可搭配基本單模或是雙模壓力模使用。
 - 機台安裝鼓風機，提供線材額外空氣冷卻。

DOUBLE DRAFT OTO DRAWING MACHINE

雙模過桿式伸線機

DCD-600/460H



model		DCD-400/320	DCD-600/460
Wire range		≤ 3.2mm	5.5~6.5mm
Capstan	Upper	400mm	600mm
	Lower	300~320mm	430~480mm

- For low carbon and high carbon wire.
 - Modular design and scalable by adding additional units.
 - High-efficiency Cheng I Wire patented gearbox. (>95% through the entire speed range.)
 - Tungsten carbide coating capstan.
 - Die boxes prepared for single or double dies, normal or pressure dies.
 - Water cooled capstan and direct or indirect water-cooled dies.
 - Optional supplemental air cooling of the wire.
 - Each OTO unit is equipped with two (2) draft capability.
- 適用低碳鋼線材。
 - 模組化設計，可通過增加機台達到擴充效能。
 - 線胴表面提供鎢鋼噴塗。
 - 專屬高效率齒輪箱，高達 95% 傳動效率。
 - 專屬線胴冷卻系統，提供極高的冷卻能力。
 - 眼膜盒可搭配基本單模或是雙模壓力模使用。
 - 眼膜盒採取強制式水冷，可強力冷卻眼膜。
 - 機台安裝鼓風機，提供線材額外空氣冷卻。
 - 每一伸線機台可安裝兩個伸線眼模。

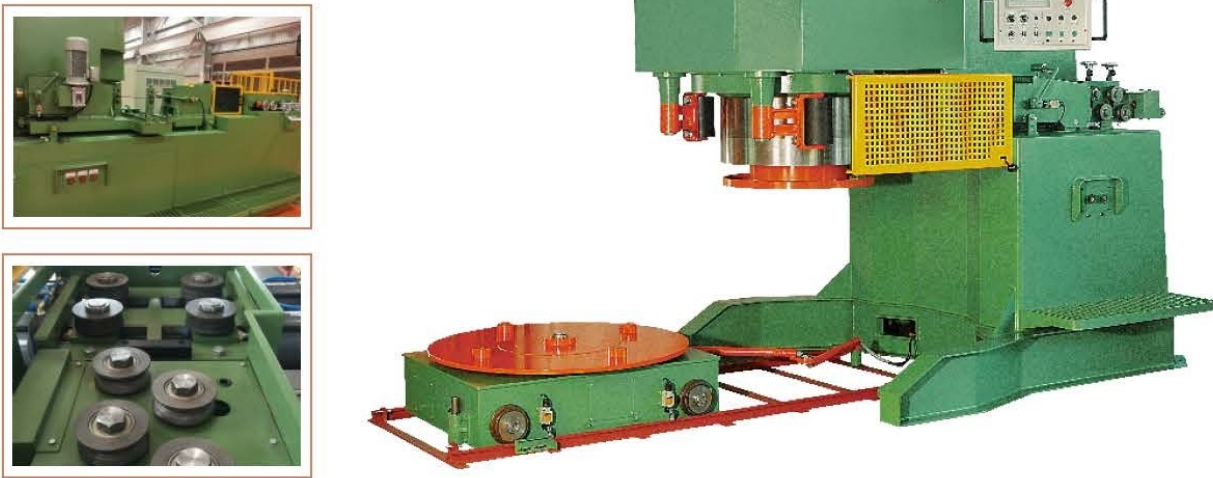
INVERTED VERTICAL CAPSTAN WIRE DRAWING MACHINE

倒立式伸線機

- IVD-400

■ IVD-600
- IVD-800

■ IVD-1000



model	IVD-400	IVD-600	IVD-800	IVD-1000
Wire range	≤ 4.0mm	5.5~8.0mm	5.5~15mm	10~26mm
Capstan	400mm	600mm	650~800mm	800~1000mm

- Single draft wire drawing machine.
- Capable of drawing all types ferrous, non-ferrous and alloy wires.
- Suitable for drawing round,hexagonal and square wires.
- Water cooled capstans and dies.
- Die boxes prepared for single or double dies, normal or pressure dies.
- Single or double position coil take-up.
- HMI for easy operation and monitoring.
- Optional accessories are available to help with the production process.

- IVD-1200

■ IVD-1300
- IVD-1400



model	IVD-1200	IVD-1300	IVD-1400
Wire range	20~32mm	20~36mm	30~40mm
Capstan	1200mm	1300mm	1400mm

- Single draft wire drawing machine.
 - Capable of drawing all types ferrous, non-ferrous and alloy wires.
 - Suitable for drawing round wires.
 - Die boxes prepared for single or double dies, normal or pressure dies.
 - Water-cooled capstans and dies.
 - HMI for easy operation and monitoring.
 - Optional Hydraulic pressure roller system to control cast.
 - Optional automatic or semi-automatic chucking and clipper.
 - Optional accessories are available to help with the production process.
- 單模式拉線機。
 - 適用於生產高 / 低碳鋼線、有色金屬線、合金鋼線。
 - 線胴表面提供鎢鋼或高碳鋼噴塗。
 - 線胴有水冷卻系統。
 - 可搭配雙台車使用。
 - 搭配人機介面，可將生產數據呈現，便利操作者監測及操作設備。
 - 壓線輪採油壓系統，以達到穩定壓制效果。
 - 提供自動與半自動油壓式夾線器可選購。
 - 提供多種配件可選購，達到提高生產效率及生產品質。

INVERTED VERTICAL CAPSTAN WIRE DRAWING MACHINE (DOUBLE DRAFT)

倒立式伸線機（雙模式）

■ IVD-640/800



model	IVD-640/800	
Wire range	Single Draft 6.0~15mm	Double Draft 6.0~12mm
Capstan	Upper Capstan 640mm	Lower Capstan 800mm

- Double draft wire drawing machine.
 - Capable of drawing ferrous and alloy wire.
 - Suitable for drawing round wires.
 - Water cooled capstan.
 - Water cast and helix adjusted in the die.
 - Direct water-cooled dies.
 - HMI for easy operation and monitoring.
 - Equipped for a single (1) or double (2) draft.
 - Optional accessories are available to help with the production process
- 單模 / 雙模 拉線機。
 - 眼模盒座可透過油壓升降系統，調整搭配單模或雙模使用。
 - 適用於圓線。
 - 線胴表面提供鎢鋼或高碳鋼噴塗。
 - 線胴有水冷卻系統。
 - 可搭配雙台車使用。
 - 搭配人機介面，可將生產數據呈現，便利操作者監測及操作設備。
 - 提供多種配件可選購，達到提高生產效率及生產品質。

INVERTED VERTICAL CAPSTAN WIRE ROLLING MACHINE

倒立式伸線機（壓花）

■ IVD-800R4



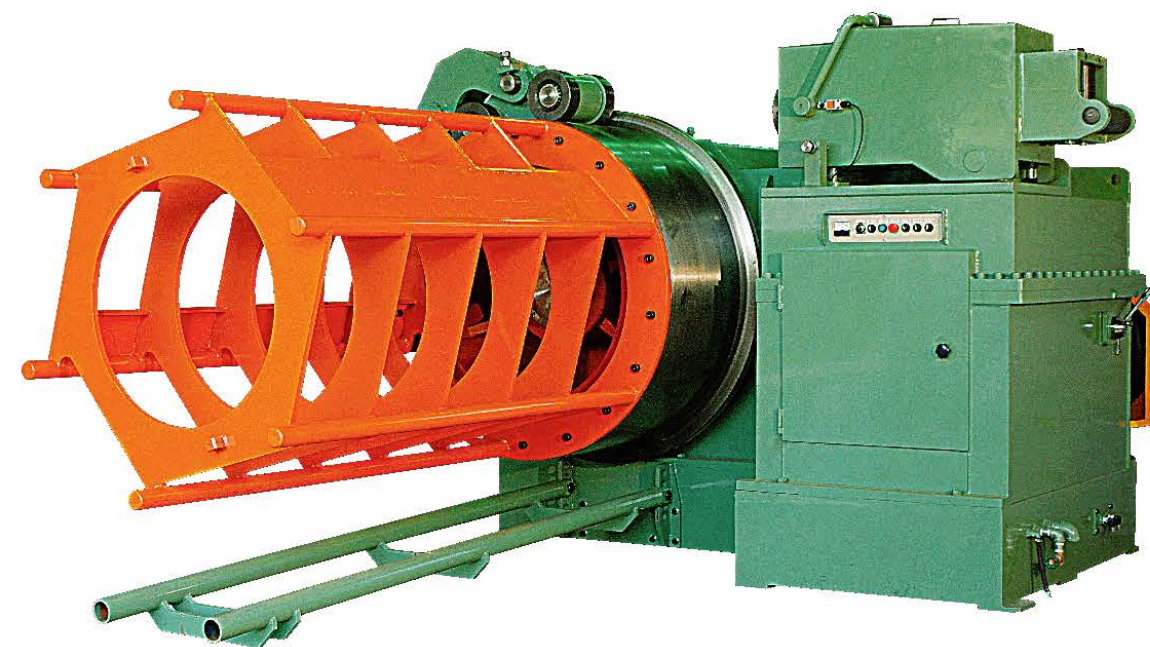
model	IVD-800R	IVD-800R4
Wire range	5.5~8.0mm	5.5~13mm
Capstan	600mm	800mm

- Single draft machine equipped with a cool-rolling cassette.
 - Designed to produce smooth or deformed reinforcing steel.
 - Water cooled capstan.
 - Wire cast and helix adjusted at the cassette.
 - Single or double position coil take-up.
 - HMI for easy operation and monitoring
 - Equipped with an integrated descaling machine.
 - Optional accessories are available to help with the production process.
- 單模搭配壓花滾輪拉線機。
 - 適用於圓線或壓花線材。
 - 線胴有水冷卻系統。
 - 線胴表面提供鎢鋼或高碳鋼噴塗。
 - 可搭配雙台車使用。
 - 搭配人機介面，可將生產數據呈現，便利操作者監測及操作設備。
 - 可搭配除銹機使用。
 - 提供多種配件可選購，達到提高生產效率及生產品質。

HORIZONTAL WIRE DRAWING MACHINE

臥式伸線機

■ HWD-1300



model	HWD-1050	HWD-1300	HWD-1500
Wire range	20~30mm	20~36mm	30~50mm
Capstan	1050mm	1300mm	1500mm

- Single draft wire drawing machine.
 - Developed for heavy wires. Capable of drawing all type of ferrous and alloy wires.
 - Wire working range up to 50 mm.
 - Capstans from 1050 to 1500 mm.
 - Block pull from 200,000 N to 500,000 N.
 - Water cooled drawing die.
 - Direct water-cooled drawing die.
 - Two speed gearbox for the prefect balance of speed performance and production process.
- Optional accessories are available to help with the production process.
- Integrated wire pay-off, pre-straightening and feeding unit.
 - Integrated shaving-pointing machine.

■ HWD-1500BC



- 單模式臥式拉線機。
- 適合低 / 中碳鋼及合金鋼線。
- 適用於 30mm 至 50mm 線材。
- 眼模盒有水冷卻系統。
- 有兩段速度可供調整，以滿足不同線徑生產需求。
- 提供多種配件可選購，達到提高生產效率及生產品質。
- 可搭配線頭車削裝置使用。
- 可搭配送線裝置使用。
- 可選配可傾翻式收料線架。
- 可選配油壓式夾頭。
- 可選配有動力式壓線輪。
- 可選配線徑大小控制裝置。

TAKE-UP COILER 收線機系列

Specifications subject to change without prior notice.

*規格如有變更，不另行通知。

HIGH SPEED COILERS - HORIZONTAL CAPSTAN

收線機

■ NSC-600DW ■ NSC-600



- 提供 300 mm 至 900 mm 尺寸的線胴選擇。
- 提供抽線眼膜或無抽線眼膜選擇。
- 線胴表面有碳化鎢噴塗，強化線胴表面硬度及使用壽命。

- Capstan sizes from 300mm to 900mm.
- Static capstan with horizontal axis coiling.
- For coiling all types of drawn wire.
- Optional drawing or non-drawing capability.
- Cast and helix straighteners and roller assemblies.
- Tungsten carbide coated capstan wear-surfaces for superior production and lifespan.
- External capstan assembly is forced air-cooled.

- 線胴與眼膜有水冷卻系統（有眼膜式）。
- 提供線材線圈大小與間隙調整輪。
- 提供風冷卻系統，達到冷卻線材表面需求。
- 可搭配不同排線設備達到排線需求。

model	NSC-300	NSC-400	NSC-400DW	NSC-600	NSC-600DW	NSC-700	NSC-760	NSC-760DW
Finished wire	0.7~2.4mm	1.0~3.2mm	0.9~3.2mm	1.6~4.5mm	1.6~4.2mm	2.6~5.5mm	3.2~6.0mm	3.2~6.0mm

DRAWING COILER FOR SKIN-PASS DRAFTING

精抽收線機

■ NSC-600S



- The skin-pass coiler used for drawing CHQ and other ferrous alloy wires.
- Integrated advanced control, length measurement, and monitoring.
- Equipped with pneumatic "goose neck" lift for continuous production when changing carriers wire feeder.
- Accumulation system available for a non-stop production.
- 精抽收線機適用於球化線材精抽之用。
- 設有定量停止裝置。
- 附有氣壓升降式供線設備。

model	NSC-400S	NSC-600S	NSC-700S
Wire range	0.8~2.4mm	2.1~4.5mm	3.0~5.5mm
Capstan	400mm	600mm	670/700mm

SPOOLER-HORIZONTAL

工字輪捲取機

■ SSPC-1000 ■ SSPC-2000 ■ SSPC-3000



model	SSPC-400	SSPC-1000	SSPC-2000	SSPC-3000
Flange	<400	400~710	710~1000	>1000

- Spooler with horizontal winding axis collects all types of drawn wire onto rigid or collapsible spools. Can be used with various size and types of spools.
- Type of wire: Ferrous, non-ferrous, stainless steel, and alloy.
- Range of Ø of wire to be wound: from 0.8 to 5.0 mm.
- Capacity and size of spools to customer requirement: 200 - 3000 kg.
- Designed to load single spools, with flange size from diameter 200 mm to 1,800 mm.
- Can be customized to use any type of spool, DIN or customer standard.
- Hydraulic lifting and lowering of spools by way of conical pintles.
- 適用於各種 DIN 或客戶指定的線軸尺寸。
- 適合低 / 中碳鋼及合金鋼線。
- 可收取線材線徑從 0.8 到 5.0 mm。
- 可依據客戶要求收取線材 200 - 3000 公斤。
- 設計用於裝載單個線軸，線軸法蘭尺寸從 200mm 到 1,800 mm。
- 可搭配拉線機使用。

MULTI-STATION PAY-OFF & TAKE-UP SYSTEM

倒立型下取式捲取機（附梅花形排列線架）

■ IVC-600F



model	IVD-400	IVD-400F	IVD-600	IVD-600F	IVD-760	IVD-760F
Wire range	0.9~2.1mm	0.9~2.1mm	1.6~4.2mm	1.6~4.2mm	3.0~5.0mm	3.0~5.0mm
Capstan	400mm	400mm	600mm	600mm	760mm	760mm

- For low, medium, high carbon or stainless-steel wire.
- For thermal treatment and/or coating and/or cleaning operations.
- Modular and scalable construction.
- PAY-OFFS:
 - Static solutions with overhead flyer.
 - Dynamic solutions, mechanically braked or motorized.
 - Designed for Carrier or spools.
- TAKE-UPS:
 - Pattern-laying on a tilted rotating table to increase coil weight.
 - "V" groove static-block or flat live-block.
 - Skin-Pass drawing version available.
- 適用於高 / 中 / 低碳鋼線，不銹鋼線等。
- 適用於熱處理和 / 或塗覆和 / 或清潔使用。
- 放線系統：
 - 靜態 / 動態放線裝置。
 - 適用於線架與線軸。
- 收線系統：
 - 成品線放在傾斜的旋轉台車上、以增加線材重量和整齊排列。
 - 可裝置 "V" 型線胴或 "平" 線胴。
 - 可選擇 "精抽" 系統。

CUTTING MACHINE

切斷機系列

Specifications subject to change without prior notice.

*規格如有變更，不另行通知。

HIGH SPEED WIRE STRAIGHTENING & CUTTING MACHINE

高速直線切斷機

■ SCM-200 SERIES

■ SCM-300 SERIES



model	SCM-320C	SCM-330C	SCM-210	SCM-220	SCM-230
Coils rolled and Ribbed wire	4.0~10mm	5.0~12mm			
Hot ribbed wire	4.0~8.0mm	5.0~10mm	4.0~7.0mm	4.0~10mm	4.0~12mm
High tensile wire	4.0~9.0mm	5.0~9.0mm			
Speed (M/min)	50~120	50~120	30~140	30~140	30~140
Min. Length	250mm	300mm	200mm	250mm	300mm

■ For low, medium, high carbon, stainless, zinc coating wire or alloy wire.

■ Cutting length up to 12 meters.

■ C / S / F series stand for the different cutting methods, respectively, for the hydraulic, fixed shear and the flying shear.

■ 適用於低碳鋼線、合金鋼線。

■ 剪斷長度最長可達 12M。

■ C/S/F 各系列為不同的剪斷方式，分別為油壓、定剪、飛剪。



PAY-OFF MACHINE 放線系統

Specifications subject to change without prior notice.

*規格如有變更，不另行通知。

OVERHEAD PAY-OFF

氣壓升降式供線柱

■ PLW-10



- PLW Pay-off is designed for low, medium, high carbon or stainless wire.
- Pay-off speed depends upon the pay-off model and height.
- Continuous operation.
- Ergonomic wire threading with pneumatic tilting.
- Wire guide cage acts as both a guide and a wire snarl detector.
- 使用氣壓做升降控制。
- 可連續生產。
- 導線籠可作為導線裝置，也可作為纏線偵測器。

model	PLW-6	PLW-10
Wire range	2.0~3.2mm	5.5~10mm

TWO POSITION WIRE SUPPLY STANDS WITH TURN TABLE

盤元轉盤

■ TWS-10

- The continuous operation allows for coil head-to-tail butt welding.
- When one side has finished drawing, turn the device 180 degrees to continue the drawing process. Meanwhile, you can load a new wire rod.
- 兩邊盤元線頭與線尾可相接，可連續生產。
- 設備轉向 180 度後可不停機繼續抽線。

model	TWS-6	TWS-10
Wire range	2.0~3.2mm	5.5~6.5mm



OVERHEAD PAY-OFF TOWER WITH TILTING LOAD TABLES

傾翻供線柱

■ PWR-7 ■ PWR-15



- PWR Series pay-offs are designed for medium carbon, low carbon, and stainless-steel wire rods.
- Rod inlet Ø from 4.75 up to 15 mm.
- Pay-off speeds up to 7.0 m/s, depending upon pay-off model.
- Height can be customized from 5-12 meters or as required.
- The continuous operation allows for coil head-to-tail butt welding.
- Ergonomic wire threading.
- Two tilting stems for easy coil loading.
- Snarl switch and wire rod break sensor.
- 適用中、低碳鋼線、不鏽鋼、合金鋼線。
- 兩個翻轉傾斜桿，可方便原料線材裝載。
- 設備高度可客製化從 5 – 12 mm。
- 纏線和斷線檢知器。
- 兩捆盤元線頭線尾可提前焊接，連續供料。

model	PWR-7	PWR-15
Wire range	5.5~8.0mm	5.5~13mm
Loading capacity	2,300kgs	2,300kgs

WIRE PAY-OFF, PRE-STRAIGHTENING AND FEEDING UNIT

橫式送線機

■ WDM-22 ■ WDM-35
■ WDM-45 ■ WDM-50



model	WDM-22	WDM-35	WDM-45	WDM-55
Wire range	10~22mm	20~35mm	30~45mm	30~50mm

- Includes feeding, straightening Wire.
- Wire working range up to 50 mm.
- Vertical and horizontal straightening rollers are equipped.
- It can be supplied with a rotating base, in the double-arm version and equipped with a wire cut-off device.
- 設備包含送線、線頭及線材矯直功能。
- 適用 20mm 至 50mm 之盤元線徑。
- 含水平、垂直矯直輪，使線材平直到下一製程。
- 可提供雙臂旋轉供線台與切斷裝置。

SHAVING-POINTING MACHINE

線頭切削機

- SPM-22 ■ SPM-35
- SPM-45 ■ SPM-55



model	SPM-22	SPM-25E	SPM-35E	SPM-35	SPM-45	SPM-55
Wire range	10~22mm	10~25mm	20~32mm	20~35mm	30~45mm	30~50mm

- Equipped with WDM series.
- Rod is pointed after the wire feeding units.
- Point lengths according to customer requirement, the machine can shave various lengths.
- Tool opening system can be controlled either manually or automatically.
- Cutting and pointing speed is adjustable.
- 配合自動送線機使用。線材從自動送線機過來後，接著車削線頭。
- 照拉線機需求，自訂不同車削長度。
- 可選擇手動或自動刀具打開系統。
- 可調整車削速度。

SNARL STOP SWITCH

纏結開關

- SS-7

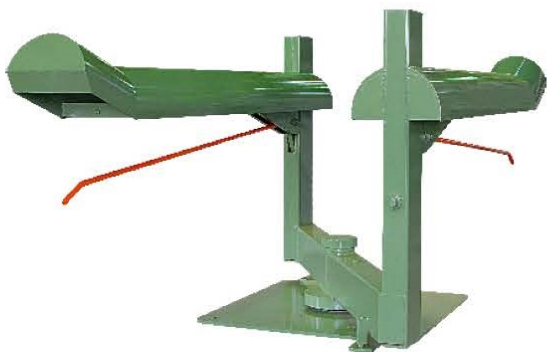


- Designed for in-line to prevent wire breaks due to entanglement.
- 設計用於防止線材纏結導致斷線。

Z-TYPE DOUBLE STATION ROD FLIPPER

Z 型供線盤

- ZDFR-7



- Continuous operation allows for coil head-to-tail butt welding.
- When one side has finished drawing, turn the device 180 degrees to continue the drawing process. Meanwhile, you can load a new wire rod.
- 兩邊盤元線頭與線尾可相接，可連續生產。
- 設備轉向 180 度後可不停機繼續抽線。

DOUBLE STATION ROD FLIPPER

雙面式供線柱架

- DFR-7

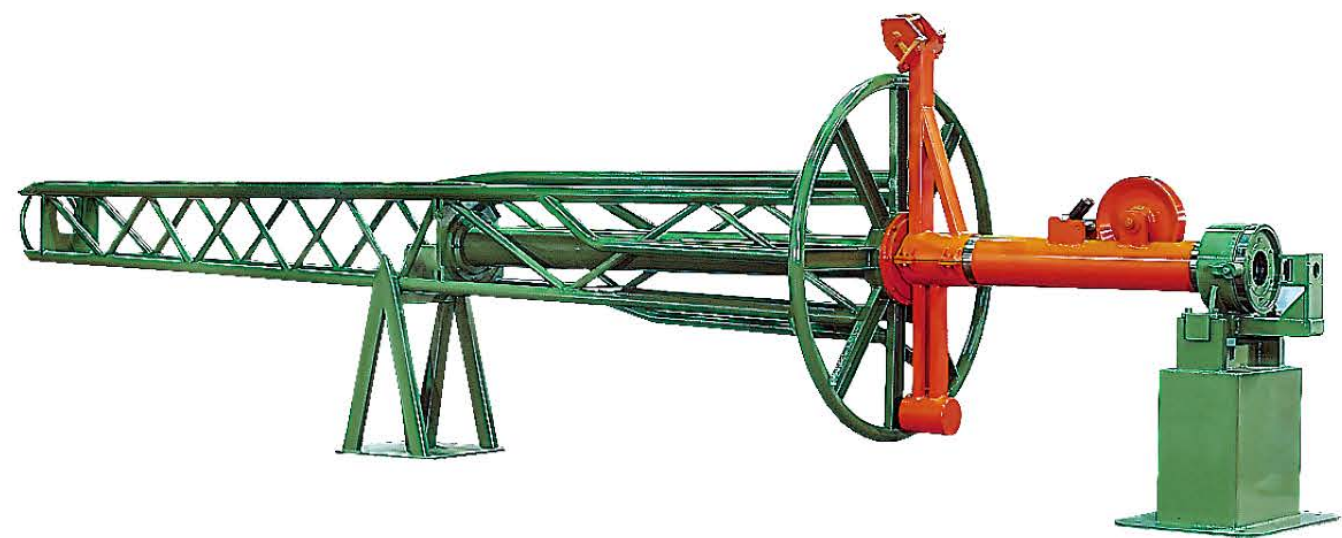


model	ZDFR-7/DFR-7
Wire range	5.5~15mm
Loading capacity	1,500~2,300kgs

HORIZONTAL TYPE ROTARY PAY-OFF

橫式盤元供線架

■ WRP-8 ■ WRP-13



model	WRP-8	WRP-15
Wire range	≤ 8.0mm	≤ 15mm

- WRP Series pay-offs are designed for high carbon wire rods.
- Rod Inlet Ø from 5.5 up to 15 mm.
- Pay-off speed according to pay-off model.
- The continuous operation allows for coil head-to-tail butt welding.
- Ergonomic wire threading.
- Horizontal loading beam.
- Driven pay-off flyer, integrated coil transporting unit.
- 適用高碳鋼線。
- 適用原料尺寸從 5.5 到 15 mm。
- 兩捆盤元線頭線尾可提前焊接，連續供料。
- 系統運轉平穩供線，不易損壞線材。

MOTORIZED ROTARY PAY-OFF

電動轉式供線盤

■ RWE-18



- Operation speed could be synchronized with the wire drawing machine or work alone.
- When the wire snarl, the wire stand will stop with wire drawing machine.
- Usually equipped with IVD series.
- There is a track under the cart with RWE-18M. The cart is movable. The movable distance is 2m.
- 可選擇單獨寸動或與伸線機同步運轉。
- 纏線時，供線盤碰觸到微動開關則與拉線設備一起停止。
- 通常與 IVD 搭配使用。
- RWE-18M 供線盤可前後移動距離約 2 米，以便將線頭送至送線輪。

model	RWE-18/RWE-18M	RWS-18
Wire range	5.5~32mm	5.5~32mm
Loading capacity	2,300Kgs	2,300Kgs

ROTARY PAY-OFF

轉式供線盤

■ RWS-18

- Non-powered wire rod stand.
- With mechanical brake.
- When the wire snarls, the wire stand will stop with wire drawing machine. (RWS-18M series)
- 無動力放線盤。
- 含機械式剎車。
- 纏線時，供線盤碰觸到微動開關則與拉線設備一起停止。(RWS-18M 系列)



90° TILTED TYPE PAY-OFF

90 度傾翻式供線設備

■ WRM-3000



- Tilting, horizontal and Vertical moving by hydraulic system.
- 水平與垂直翻轉，達到水平入料，直立供料功能。

Model	WRM-3000
Wire range	10-32mm
Loading capacity	3000kgs

■ CTM-1500



OTHER
EQUIPMENT/
ACCESSORIES

其他設備 / 配件

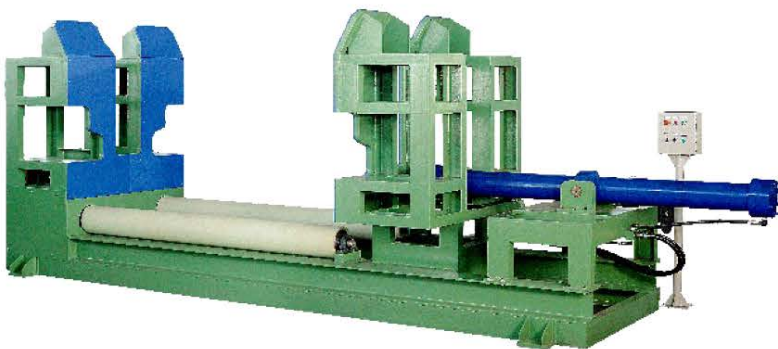
Specifications subject to change without prior notice.

*規格如有變更，不另行通知。

WIRE COMPACTOR (HORIZONTAL)

臥式壓線機

■ CM-10H



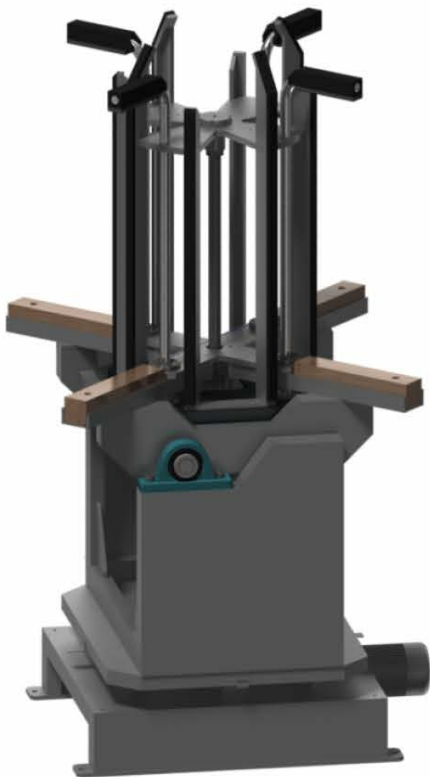
model	CM-10H
Coil D.	820-1200mm
Coil O.D.	1130-1600mm

- After compressing the wire, tie the wire with the strap.
- The wire touch area covered with MC Nylon to protect the wire surface.
- Compact distance up to 2000mm.
- 將線材壓縮後，配合打包帶將線綁緊。
- 線材接觸地方覆蓋尼龍板，保護線材表面。
- 壓縮行程可達 2000mm。

WIRE COMPACTOR (VERTICAL)

立式壓線機

■ CM-10V



- After compressing the wire, tie the wire with the strap.
- The wire touch area covered with MC Nylon to protect the wire surface.
- Compact distance up to 900mm.
- Designed for carrier or stripper.
- 將線材壓縮後，配合打包帶將線綁緊。
- 線材接觸地方覆蓋尼龍板，保護線材表面。
- 壓縮行程可達 900mm。

model	CM-6V	CM-8V	CM-10V	CM-12V
Coil I.D.	480	650	840	1030
Coil O.D.	1000	1200	1400	1500

COILER OPENER

開盤機

■ COM-36

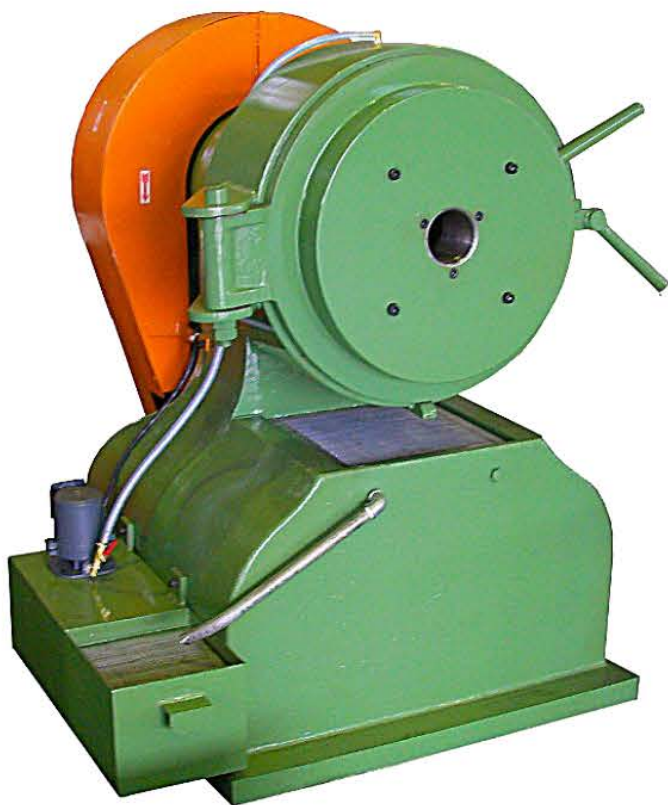


- Designed for Low, Medium, high carbon, and alloy wire.
- Working Wire range from 15mm to 36mm.
- 適用於低 / 中 / 高碳鋼線，合金鋼線。
- 適用線徑最大到 36mm。

SWAGING MACHINES

線頭機

■ SM-03 ■ SM-15



model	SM-03	SM-15
Wire range	3.0~12mm	10~30mm

- Designed for Low, Medium, high carbon, stainless, alloy wire, and non-ferrous steel.
 - To downsize the diameter of the wire end by forging.
- 適用於低 / 中 / 高碳鋼線，不鏽鋼線，合金鋼線和非鐵線材。
 - 以捶打的方式，縮小入線頭直徑。

WIRE POINTING MACHINE – (Wire Pointer)

線頭機

■ RPM-15 ■ RPM-25
■ RPM-35



- Designed for Low, Medium, high carbon, stainless, and alloy wire.
- Reduce the wire end diameter.
- Pointing head can rotate 90 degrees, the pointing roller becomes horizontal or vertical for ease of operation.
- 適合低 / 中 / 高碳鋼線，不鏽鋼線或合金線材。
- 縮小線頭直徑。
- 軋線輪可做 90 度翻轉。

model	RPM-15	RPM-25	RPM-35
Wire range	7.0~15mm	10~25mm	19~35mm

■ PM-6 ■ PM-12

- Designed for Low, Medium, high carbon, stainless, and alloy wire.
- Reduce the wire end diameter.
- 適合低 / 中 / 高碳鋼線，不鏽鋼線或合金線材。
- 縮小線頭直徑。

model	PM-6	PM-12
Wire range	1.0~7.0mm 0.7~3.2mm	4.0~13mm



BUTT WELDERS

接線機

■ 4KVA



■ 5KVA



model	2KVA	4KVA	5KVA	10KVA	20KVA	30KVA	50KVA
steel wire	0.4~2.6mm	1.5~4.0mm	2.5~6.0mm	4.0~10mm	5.0~15mm	6.0~20mm	10~25mm
Stainless steel	0.4~2.0mm	1.5~3.0mm	2.5~5.0mm	5.0~10mm	5.0~12mm	7.0~18mm	9.0~22mm
Copper wire	0.5~2.2mm	1.2~3.2mm	2.0~3.6mm	3.6~8.0mm	6.0~10mm	8.0~15mm	10~16mm
Aluminum wire	0.6~2.6mm	1.5~3.6mm	2.5~6.0mm	5.0~10mm	5.0~16mm	8.0~20mm	10~22mm

- Continuous operation allows for coil head-to-tail butt welding.
- 線頭兩端可使用此設備焊接在一起。

LUBRICATING APPLICATOR

粉夾



- Improved die life and optimizes lubricant pick-up.
- 提高模具壽命並提高潤滑粉附著。

model	LA-4	LA-7
Wire range	0.8~4.0mm	4.0~15mm

ROTARY DIE BOXES

迴轉眼模機

■ SRD-4N/SRD-7N ■ SRD-16/SRD-26/SRD-36

- Designed for SCWD, DCD, and IVD series.
- Improved die life and increase the wire surface roundness.
- Stirs the Lubricant powder and optimizes lubricant pick-up.
- The speed synchronizes with the wire drawing machine.
- Wire working range from 0.7mm to 36mm.
- 可搭配直線式伸線機或倒立型伸線機使用。
- 可提升眼模壽命及增加線材表面真圓度。
- 可攪拌潤滑粉以提高潤滑粉附著於線材表面。
- 旋轉速度可與拉線設備速度連動。
- 適用線徑從 0.7mm 到 36mm



model	SRD-4N	SRD-7N	SRD-16	SRD-26	SRD-36
Wire range	0.8~3.2mm	2.0~6.5mm	5.5~15mm	10~26mm	20~34mm

製品製造流程

Hardware Wire (Use For Electroplate) 五金線 (電鍍用)



Galvanizing Wire (Hot Dip Type) 鍍鋅線 (熱浸式)

連續退火爐式 Continuous annealing system



電器退火爐式 Electric furnace annealing system



High Carbon Steel Wire 高碳鋼線



Steel Nail 鋼釘



P.C. Wire 預力鋼線



Flat Wire 扁線(紙箱釘、訂書釘用)



Stainless Steel Wire 不鏽鋼線



Spheroidizing Wire (AISI 1018~1022) 球化線



Weight Conversion Table

	kg	g	lb	ounce
kg	1	1000	2.2046	35.2736
g	0.001	1	0.0022	0.035227
lb	0.4536	453.59	1	16
ounce	0.02835	28.35	0.0625	1

Pressure/Tension Conversion Table

	psi	kg/cm2	kg/mm2	bar	mpa	n/mm2
psi	1	0.0703	0.0007	0.06894	0.00689	0.0029
kg/cm2	14.223343	1	100	0.98067	0.09806	9.8039
kg/mm2	1422.334	0.01	1	98.13542	9.8068	9.80392
bar	14.5038	1.01971	0.01019	1	0.1	0.042061
mpa	145.0377	10.197	0.10197	10	1	1
n/mm2	344.75	0.09803	0.102	23.77499	1	1

"R" SERIES DIE SIZES

STEEL WIRE DRAWING	MIN. WIRE SIZE	MAX. WIRE SIZE	STD NIB	HEIGHT	STD CASE	HEIGHT	GRADE COLBAT
	DIA.	DIA.	DIA.	DIA.	DIA.	DIA.	%
R2	0.004	0.128	0.325	0.330	1.000	0.563	6
R2	0.004	0.128	0.325	0.330	1.500	0.750	6
R3	0.010	0.182	0.450	0.380	1.500	0.750	6
R4	0.015	0.230	0.500	0.450	1.500	0.875	6
RG	0.020	0.250	0.562	0.500	1.500	0.875	6 or 12
R5	0.020	0.280	0.625	0.600	1.500	0.875	6 or 12
R6	0.025	0.350	0.710	0.700	2.000	1.125	12
R7	0.100	0.425	0.768	0.768	3.000	1.375	12
R8	0.220	0.516	1.000	0.820	3.000	1.750	12
R9	0.310	0.687	1.187	0.820	3.000	1.750	12
R10	0.400	0.750	1.500	1.000	3.000	2.000	12
R10	0.400	0.750	1.500	1.000	4.000	2.000	12
R11	0.710	1.125	1.830	1.250	4.000	2.250	12
R12	0.950	1.375	2.185	1.375	4.000	2.375	12
R14	1.225	1.750	2.560	1.375	6.000	2.500	12
R15	1.475	2.250	3.000	1.375	6.000	2.500	12
R15	1.475	2.250	3.000	1.375	7.000	2.500	12
R16	1.850	2.500	3.500	1.375	6.000	2.500	15
R16	1.850	2.500	3.500	1.375	7.000	2.500	15
R17	2.225	3.000	4.000	1.500	9.000	3.000	15
number	INCHES	INCHES	INCHES	INCHES	INCHES	INCHES	PERCENT

"JIS" STANDARD DIE SIZES

STEEL WIRE DRAWING	MIN. WIRE SIZE	MAX. WIRE SIZE	STD NIB	HEIGHT	STD CASE	HEIGHT
	DIA.	DIA.	DIA.	DIA.	DIA.	DIA.
W101	0.2	0.7	6	4	24	7
W102	0.5	1.5	9	6	24	12
W103	0.9	2.5	12	8	30	15
W104	2.5	4.0	15	10	42	20
W105	4	6	20	14	55	24
W106	6	8	25	18	60	28
W107	8	10	30	22	70	35
W108	10	13	35	25	85	40
W109	13	16	40	27	100	45
W110	16	20	50	30	125	50
W111	20	26	60	35	145	60
W112	26	32	70	40	175	70
W113	32	38	80	45	195	80
W114	38	46	90	50	215	90
W115	46	54	100	50	230	90
W116	54	62	110	50	230	90
W117	62	70	120	55	250	100
W118	70	78	130	55	275	100
W119	78	86	140	60	295	110
W120	86	94	150	60	315	110
number	mm	mm	mm	mm	mm	mm